



YENEPOYA

(DEEMED TO BE UNIVERSITY)

Recognized under Sec 3(A) of the UGC Act 1956

Accredited by NAAC with 'A' Grade

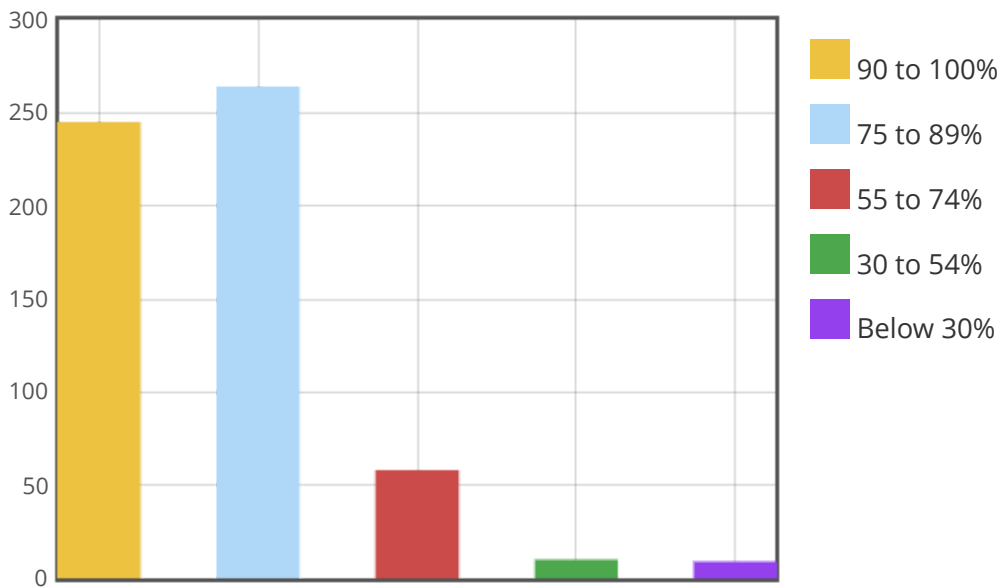
***Online Student Satisfaction Survey on Teaching
Learning and Evaluation Process***

How much of the curricula and syllabi are covered in the Discipline in which you are studying?

Multiple Choice Question (Single Response)

| | |
|----------------------------|---------------|
| <i>Users Answered</i> | 581 |
| <i>Users Skipped</i> | 8 |
| <i>Most Selected Value</i> | 75 to 89% [2] |
| <i>Nr of Selections</i> | 263 |
| <i>Median</i> | 75 to 89% [2] |

| | Number of selections | Fraction of selections |
|------------|----------------------|------------------------|
| 90 to 100% | 244 | 42.00% |
| 75 to 89% | 263 | 45.27% |
| 55 to 74% | 57 | 9.81% |
| 30 to 54% | 9 | 1.55% |
| Below 30% | 8 | 1.38% |

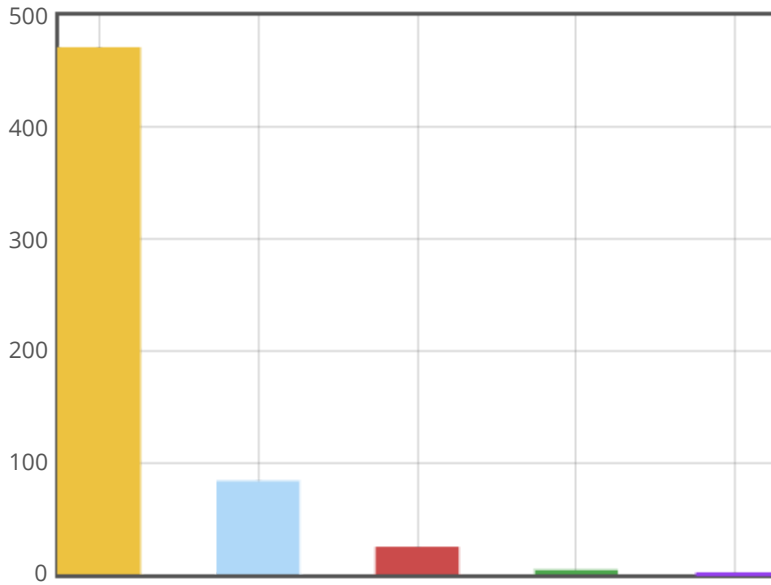


What categories of teachers are involved in the theory and practical classes in your discipline?

Multiple Choice Question (Single Response)

| | |
|----------------------------|---|
| <i>Users Answered</i> | 577 |
| <i>Users Skipped</i> | 12 |
| <i>Most Selected Value</i> | Professors, Associate Professors, Assistant Professors and Others (Lecturers, Tutors, Demonstrators and Residents [1] |
| <i>Nr of Selections</i> | 470 |
| <i>Median</i> | Professors, Associate Professors, Assistant Professors and Others (Lecturers, Tutors, Demonstrators and Residents [1] |

| | Number of selections | Fraction of selections |
|--|----------------------|------------------------|
| Professors, Associate Professors, Assistant Professors and Others (Lecturers, Tutors, Demonstrators and Residents) | 470 | 81.46% |
| Associate Professors, Assistant Professors and others | 82 | 14.21% |
| Assistant Professors and others | 23 | 3.99% |
| Others | 2 | 0.35% |
| None of the above | 0 | 0% |



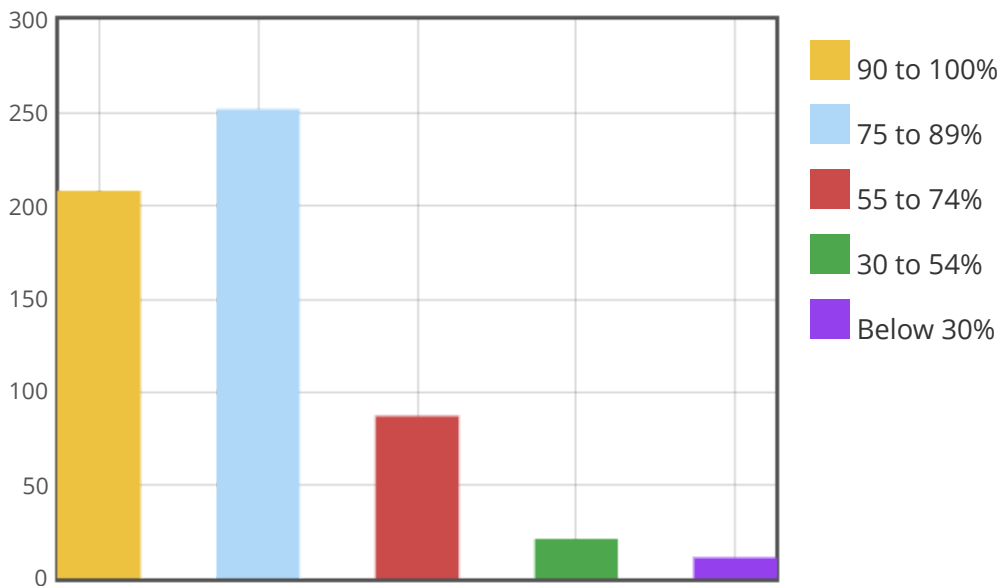
- Professors, Associate Professors, Assistant Professors and Others (Lecturers, Tutors, Demonstrators and Residents)
- Associate Professors, Assistant Professors and others
- Assistant Professors and others
- Others
- None of the above

What percentage of teachers is effectively communicating domain knowledge using IT skills and Soft Skills in the Teaching Learning Process?

Multiple Choice Question (Single Response)

| | |
|----------------------------|---------------|
| <i>Users Answered</i> | 574 |
| <i>Users Skipped</i> | 15 |
| <i>Most Selected Value</i> | 75 to 89% [2] |
| <i>Nr of Selections</i> | 251 |
| <i>Median</i> | 75 to 89% [2] |

| | Number of selections | Fraction of selections |
|------------|----------------------|------------------------|
| 90 to 100% | 207 | 36.06% |
| 75 to 89% | 251 | 43.73% |
| 55 to 74% | 86 | 14.98% |
| 30 to 54% | 20 | 3.48% |
| Below 30% | 10 | 1.74% |

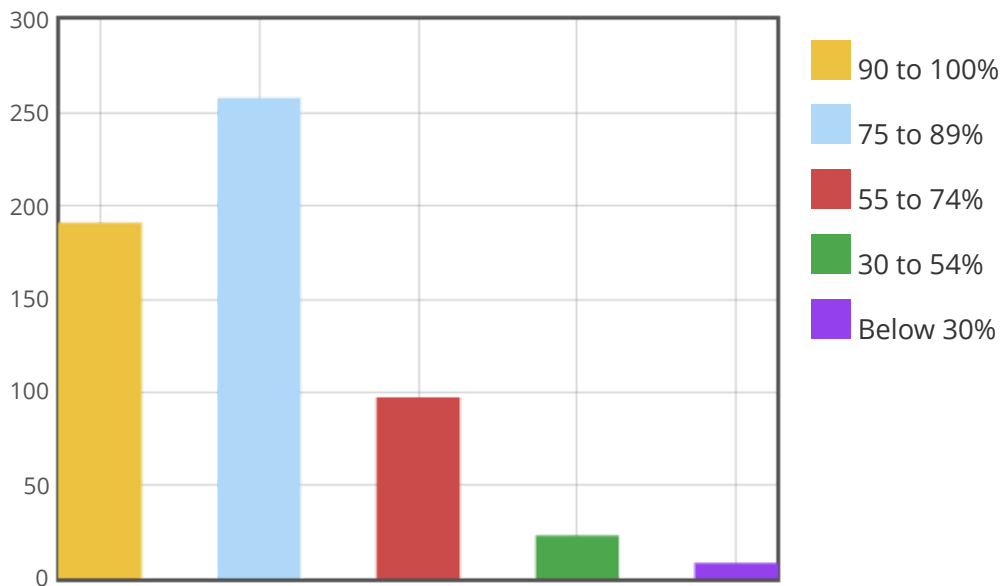


Do the teachers build-up the expected curricular competencies, programme outcomes and course outcomes in you?

Multiple Choice Question (Single Response)

| | |
|----------------------------|---------------|
| <i>Users Answered</i> | 572 |
| <i>Users Skipped</i> | 17 |
| <i>Most Selected Value</i> | 75 to 89% [2] |
| <i>Nr of Selections</i> | 257 |
| <i>Median</i> | 75 to 89% [2] |

| | Number of selections | Fraction of selections |
|------------|----------------------|------------------------|
| 90 to 100% | 190 | 33.22% |
| 75 to 89% | 257 | 44.93% |
| 55 to 74% | 96 | 16.78% |
| 30 to 54% | 22 | 3.85% |
| Below 30% | 7 | 1.22% |

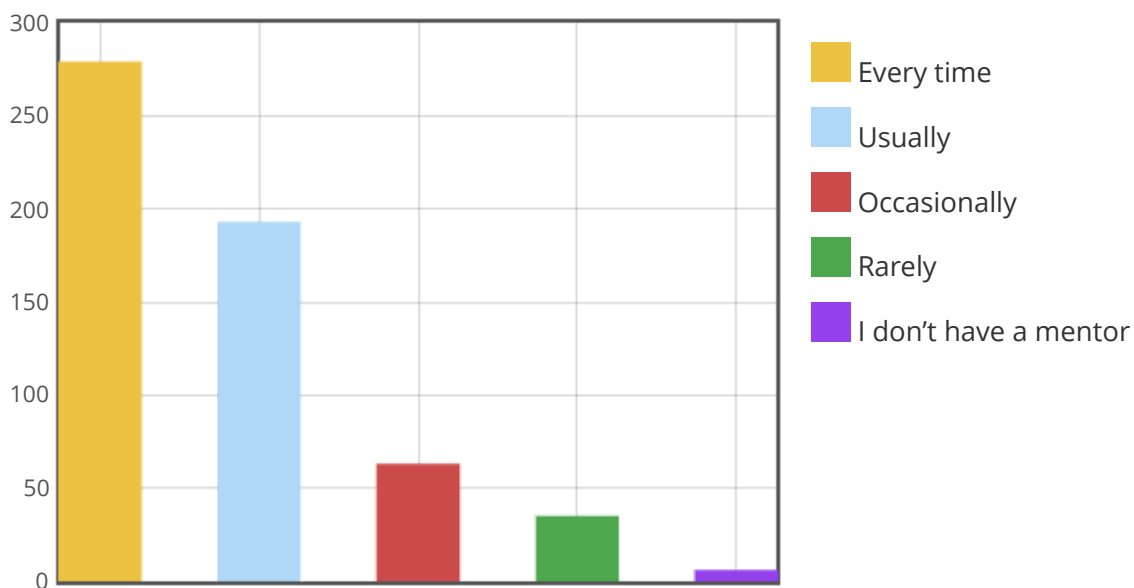


Does your mentor follow up necessarily on the tasks assigned to you?

Multiple Choice Question (Single Response)

| | |
|----------------------------|----------------|
| <i>Users Answered</i> | 571 |
| <i>Users Skipped</i> | 18 |
| <i>Most Selected Value</i> | Every time [1] |
| <i>Nr of Selections</i> | 278 |
| <i>Median</i> | Usually [2] |

| | Number of selections | Fraction of selections |
|-----------------------|----------------------|------------------------|
| Every time | 278 | 48.69% |
| Usually | 192 | 33.63% |
| Occasionally | 62 | 10.86% |
| Rarely | 34 | 5.95% |
| I don't have a mentor | 5 | 0.88% |

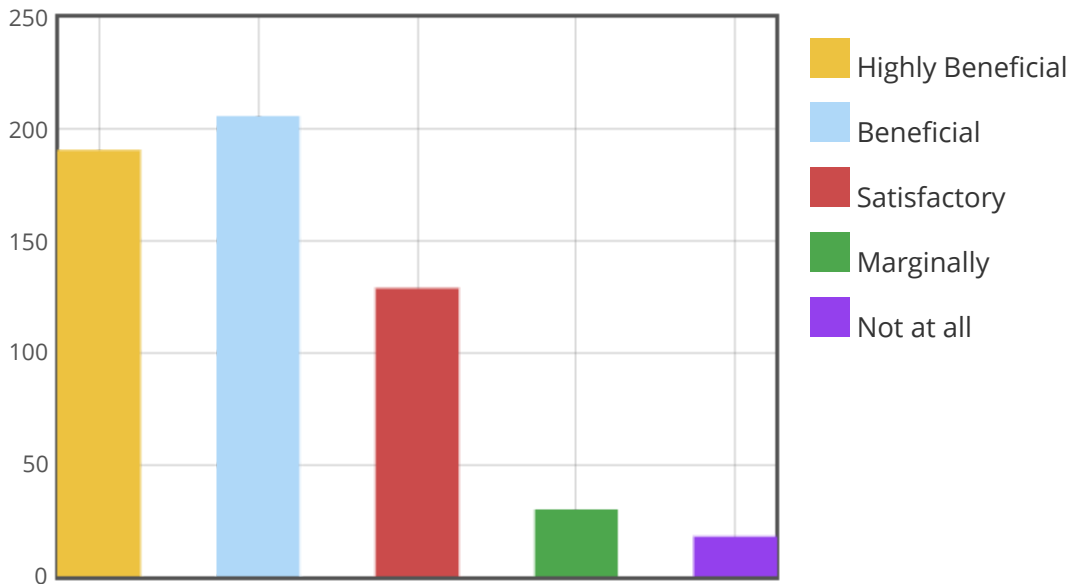


To what extent is the mentoring process in your institution beneficial to you for cognitive, social and emotional growth?

Multiple Choice Question (Single Response)

| | |
|----------------------------|----------------|
| <i>Users Answered</i> | 569 |
| <i>Users Skipped</i> | 20 |
| <i>Most Selected Value</i> | Beneficial [2] |
| <i>Nr of Selections</i> | 205 |
| <i>Median</i> | Beneficial [2] |

| | Number of selections | Fraction of selections |
|-------------------|----------------------|------------------------|
| Highly Beneficial | 190 | 33.39% |
| Beneficial | 205 | 36.03% |
| Satisfactory | 128 | 22.50% |
| Marginally | 29 | 5.10% |
| Not at all | 17 | 2.99% |

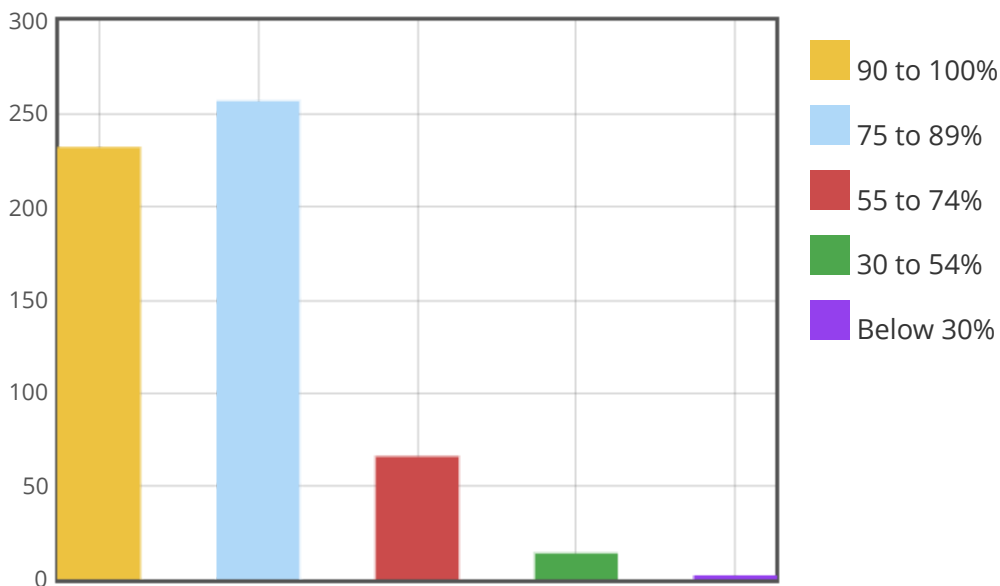


To what extent clinical and practical facilities related to your discipline have been made available to you?

Multiple Choice Question (Single Response)

| | |
|----------------------------|---------------|
| <i>Users Answered</i> | 566 |
| <i>Users Skipped</i> | 23 |
| <i>Most Selected Value</i> | 75 to 89% [2] |
| <i>Nr of Selections</i> | 256 |
| <i>Median</i> | 75 to 89% [2] |

| | Number of selections | Fraction of selections |
|------------|----------------------|------------------------|
| 90 to 100% | 231 | 40.81% |
| 75 to 89% | 256 | 45.23% |
| 55 to 74% | 65 | 11.48% |
| 30 to 54% | 13 | 2.30% |
| Below 30% | 1 | 0.18% |

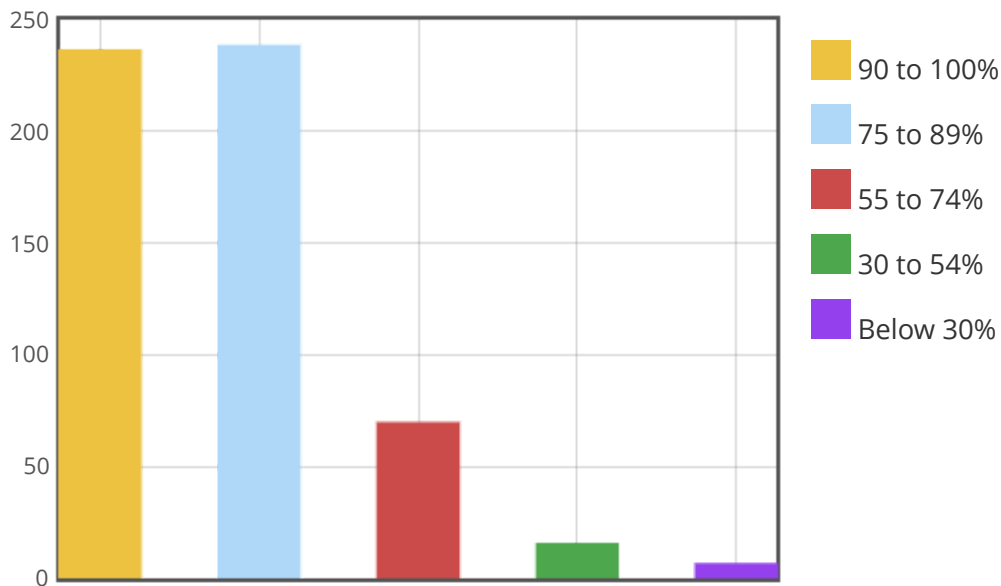


What extent of training are you provided with, in the skill and simulation labs, clinical ward rounds / rotations and lab exercises related to your discipline?

Multiple Choice Question (Single Response)

| | |
|----------------------------|---------------|
| <i>Users Answered</i> | 564 |
| <i>Users Skipped</i> | 25 |
| <i>Most Selected Value</i> | 75 to 89% [2] |
| <i>Nr of Selections</i> | 238 |
| <i>Median</i> | 75 to 89% [2] |

| | Number of selections | Fraction of selections |
|------------|----------------------|------------------------|
| 90 to 100% | 236 | 41.84% |
| 75 to 89% | 238 | 42.20% |
| 55 to 74% | 69 | 12.23% |
| 30 to 54% | 15 | 2.66% |
| Below 30% | 6 | 1.06% |

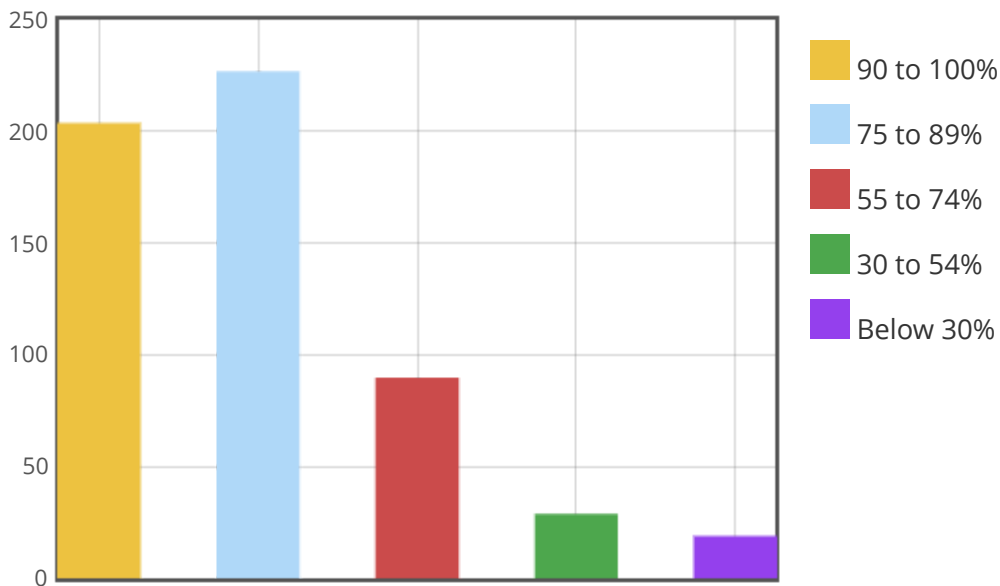


What percentage of teachers use ICT-enabled methods like multimedia, web-based learning and national e-resources while teaching?

Multiple Choice Question (Single Response)

| | |
|----------------------------|---------------|
| <i>Users Answered</i> | 564 |
| <i>Users Skipped</i> | 25 |
| <i>Most Selected Value</i> | 75 to 89% [2] |
| <i>Nr of Selections</i> | 226 |
| <i>Median</i> | 75 to 89% [2] |

| | Number of selections | Fraction of selections |
|------------|----------------------|------------------------|
| 90 to 100% | 203 | 35.99% |
| 75 to 89% | 226 | 40.07% |
| 55 to 74% | 89 | 15.78% |
| 30 to 54% | 28 | 4.96% |
| Below 30% | 18 | 3.19% |

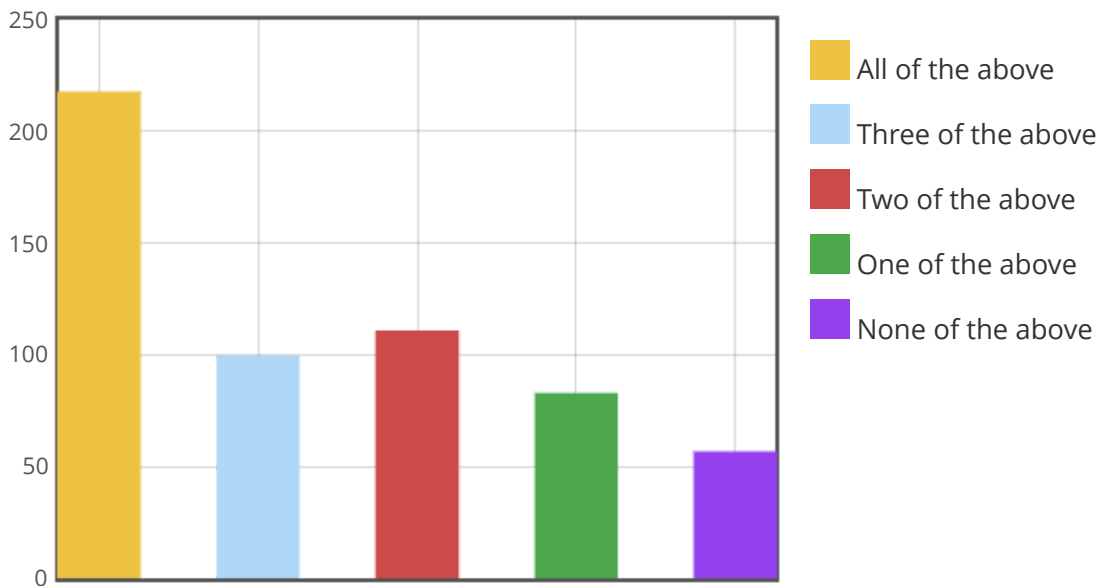


What is the extent of opportunities given to you for outdoor learning like **internship, student exchanges, field visits and projects?**

Multiple Choice Question (Single Response)

| | |
|----------------------------|------------------------|
| <i>Users Answered</i> | 564 |
| <i>Users Skipped</i> | 25 |
| <i>Most Selected Value</i> | All of the above [1] |
| <i>Nr of Selections</i> | 217 |
| <i>Median</i> | Three of the above [2] |

| | Number of selections | Fraction of selections |
|--------------------|----------------------|------------------------|
| All of the above | 217 | 38.48% |
| Three of the above | 99 | 17.55% |
| Two of the above | 110 | 19.50% |
| One of the above | 82 | 14.54% |
| None of the above | 56 | 9.93% |

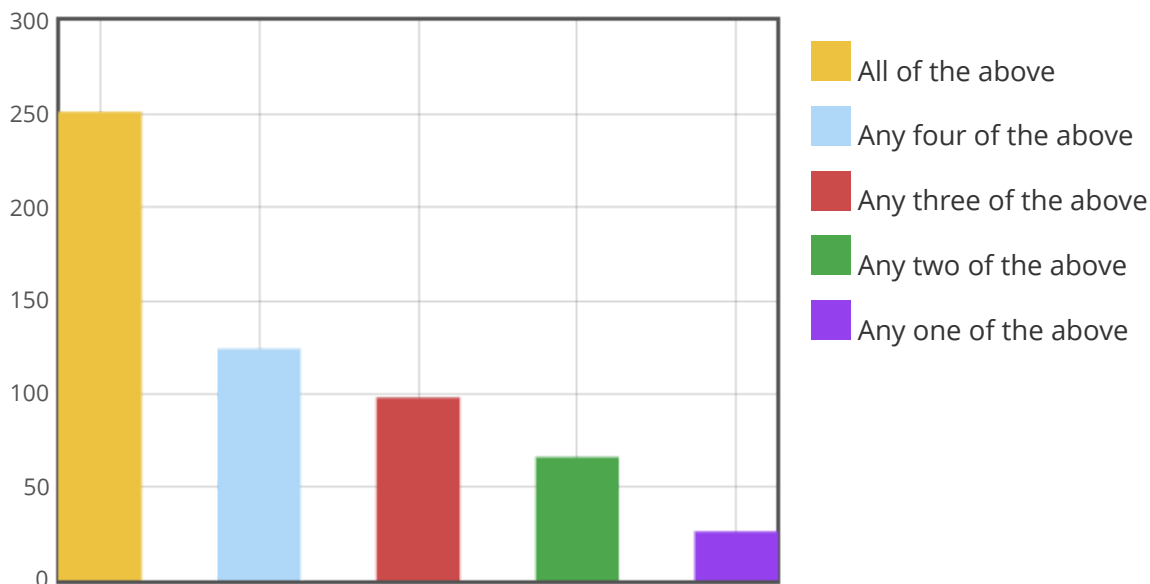


Does the institution provide the opportunities for **experiential learning, including problem- based learning, case-based learning, evidence-based learning, competency building, seminars, group discussions, to enhance knowledge and skills in your discipline?**

Multiple Choice Question (Single Response)

| | |
|----------------------------|---------------------------|
| <i>Users Answered</i> | 560 |
| <i>Users Skipped</i> | 29 |
| <i>Most Selected Value</i> | All of the above [1] |
| <i>Nr of Selections</i> | 250 |
| <i>Median</i> | Any four of the above [2] |

| | Number of selections | Fraction of selections |
|------------------------|----------------------|------------------------|
| All of the above | 250 | 44.64% |
| Any four of the above | 123 | 21.96% |
| Any three of the above | 97 | 17.32% |
| Any two of the above | 65 | 11.61% |
| Any one of the above | 25 | 4.46% |

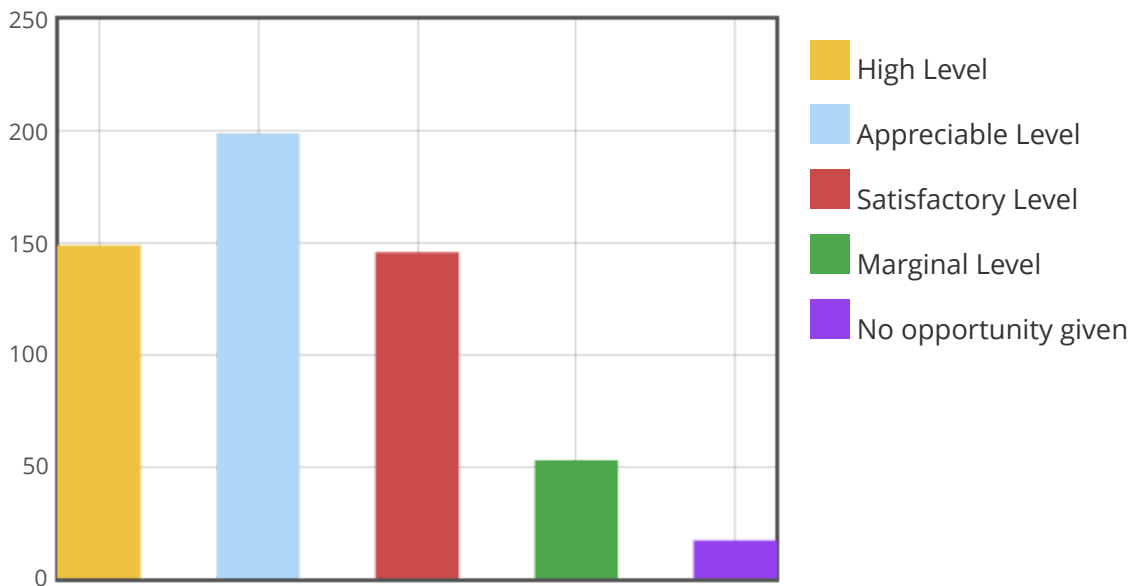


What is the level of opportunities provided by your institution to develop employability and entrepreneurship skills to prepare you for your career?

Multiple Choice Question (Single Response)

| | |
|----------------------------|-----------------------|
| <i>Users Answered</i> | 559 |
| <i>Users Skipped</i> | 30 |
| <i>Most Selected Value</i> | Appreciable Level [2] |
| <i>Nr of Selections</i> | 198 |
| <i>Median</i> | Appreciable Level [2] |

| | Number of selections | Fraction of selections |
|----------------------|----------------------|------------------------|
| High Level | 148 | 26.48% |
| Appreciable Level | 198 | 35.42% |
| Satisfactory Level | 145 | 25.94% |
| Marginal Level | 52 | 9.30% |
| No opportunity given | 16 | 2.86% |

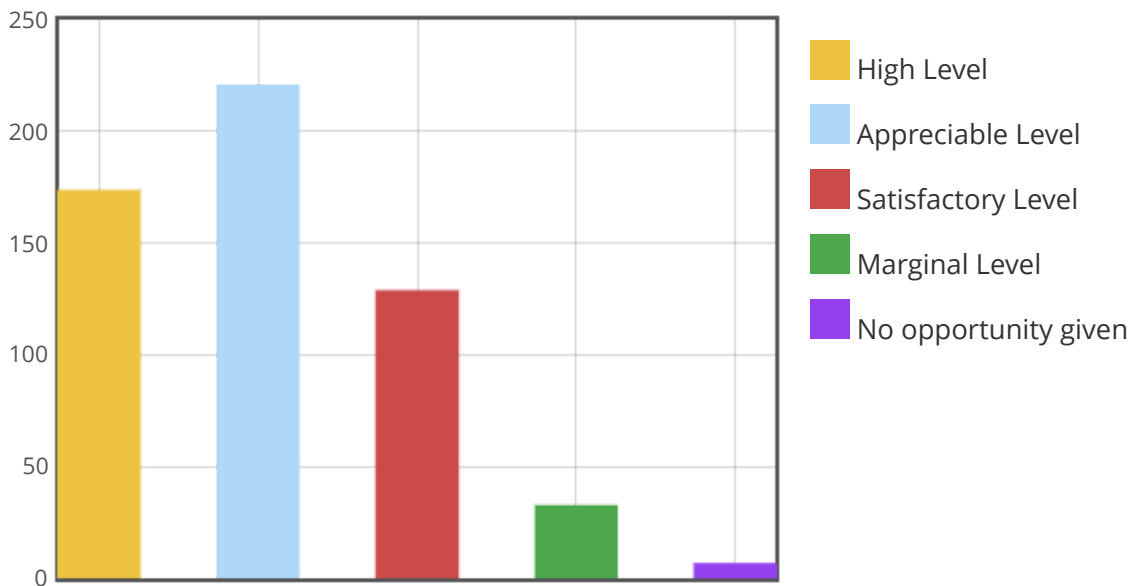


What is the level of value-added courses / training given by your institution in the area of professional ethics and values, community service, preventive health care and rural health care?

Multiple Choice Question (Single Response)

| | |
|----------------------------|-----------------------|
| <i>Users Answered</i> | 559 |
| <i>Users Skipped</i> | 30 |
| <i>Most Selected Value</i> | Appreciable Level [2] |
| <i>Nr of Selections</i> | 220 |
| <i>Median</i> | Appreciable Level [2] |

| | Number of selections | Fraction of selections |
|----------------------|----------------------|------------------------|
| High Level | 173 | 30.95% |
| Appreciable Level | 220 | 39.36% |
| Satisfactory Level | 128 | 22.90% |
| Marginal Level | 32 | 5.72% |
| No opportunity given | 6 | 1.07% |

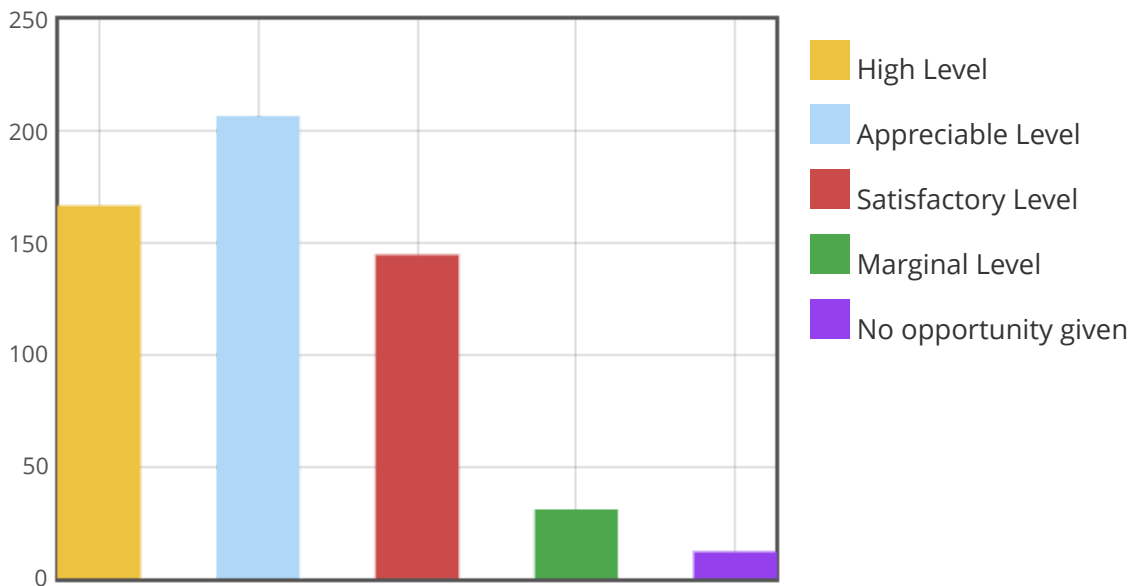


What level of monitoring and evaluation is available in your institution for assessing the effectiveness and interactivity of the classroom proceedings/learning sessions?

Multiple Choice Question (Single Response)

| | |
|----------------------------|-----------------------|
| <i>Users Answered</i> | 557 |
| <i>Users Skipped</i> | 32 |
| <i>Most Selected Value</i> | Appreciable Level [2] |
| <i>Nr of Selections</i> | 206 |
| <i>Median</i> | Appreciable Level [2] |

| | Number of selections | Fraction of selections |
|----------------------|----------------------|------------------------|
| High Level | 166 | 29.80% |
| Appreciable Level | 206 | 36.98% |
| Satisfactory Level | 144 | 25.85% |
| Marginal Level | 30 | 5.39% |
| No opportunity given | 11 | 1.97% |

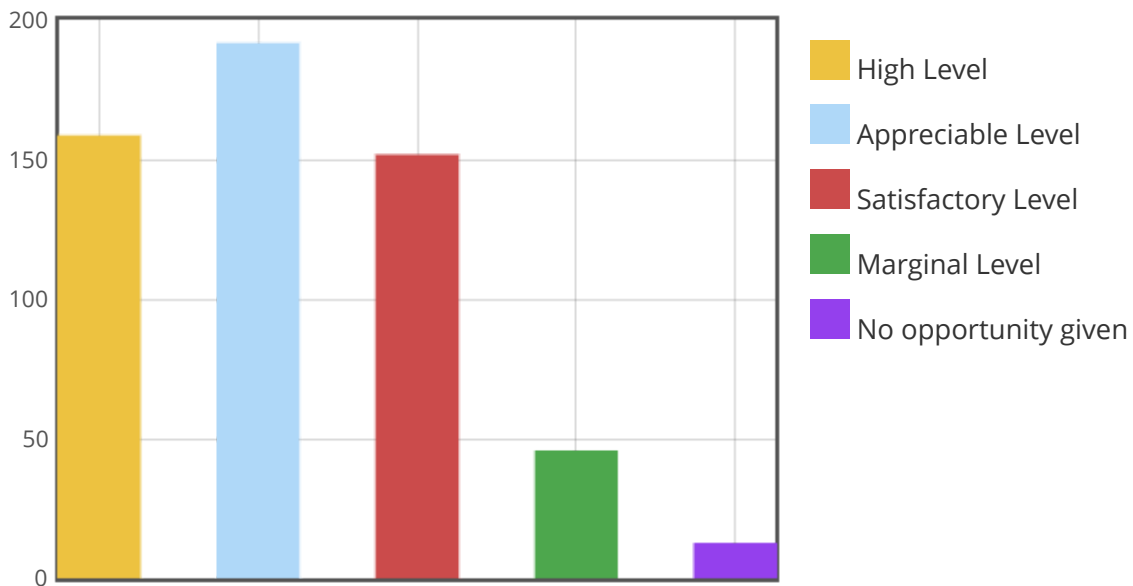


To what extent the institutional ambience and class room teaching has improved your creative thinking and analytical skills?

Multiple Choice Question (Single Response)

| | |
|----------------------------|-----------------------|
| <i>Users Answered</i> | 557 |
| <i>Users Skipped</i> | 32 |
| <i>Most Selected Value</i> | Appreciable Level [2] |
| <i>Nr of Selections</i> | 191 |
| <i>Median</i> | Appreciable Level [2] |

| | Number of selections | Fraction of selections |
|----------------------|----------------------|------------------------|
| High Level | 158 | 28.37% |
| Appreciable Level | 191 | 34.29% |
| Satisfactory Level | 151 | 27.11% |
| Marginal Level | 45 | 8.08% |
| No opportunity given | 12 | 2.15% |



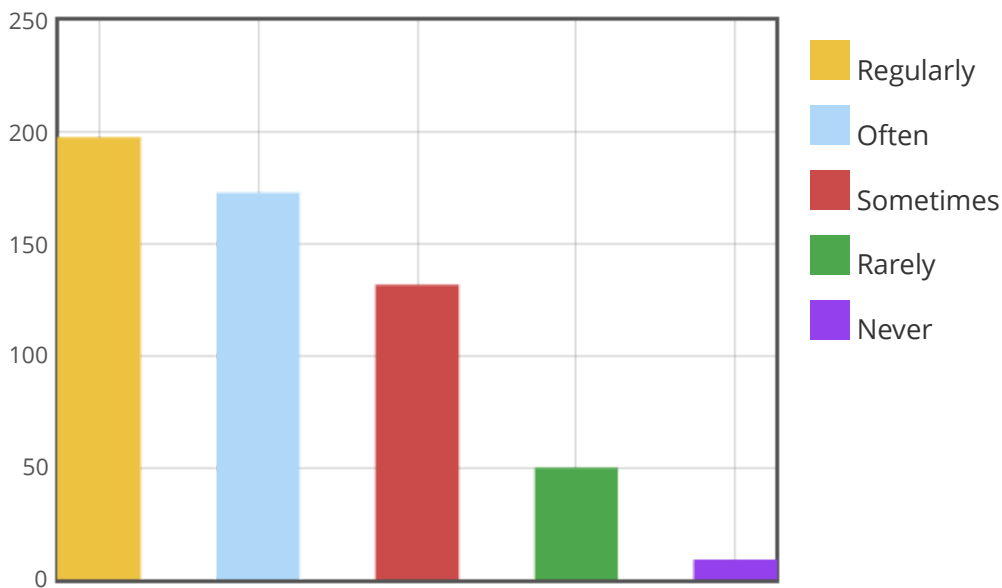
Q- 16

How frequently your performance in academic assignments are discussed and reviewed with you by the teachers?

Multiple Choice Question (Single Response)

| | |
|----------------------------|---------------|
| <i>Users Answered</i> | 557 |
| <i>Users Skipped</i> | 32 |
| <i>Most Selected Value</i> | Regularly [1] |
| <i>Nr of Selections</i> | 197 |
| <i>Median</i> | Often [2] |

| | Number of selections | Fraction of selections |
|-----------|----------------------|------------------------|
| Regularly | 197 | 35.37% |
| Often | 172 | 30.88% |
| Sometimes | 131 | 23.52% |
| Rarely | 49 | 8.80% |
| Never | 8 | 1.44% |

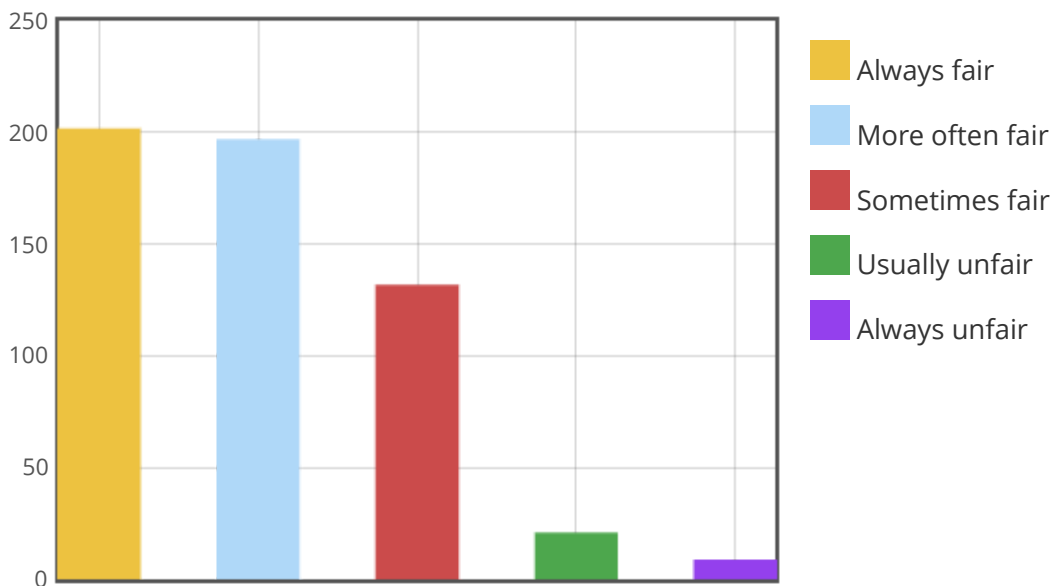


What is your assessment about the fairness of the internal evaluation process adopted by the teachers?

Multiple Choice Question (Single Response)

| | |
|----------------------------|---------------------|
| <i>Users Answered</i> | 556 |
| <i>Users Skipped</i> | 33 |
| <i>Most Selected Value</i> | Always fair [1] |
| <i>Nr of Selections</i> | 201 |
| <i>Median</i> | More often fair [2] |

| | Number of selections | Fraction of selections |
|-----------------|----------------------|------------------------|
| Always fair | 201 | 36.15% |
| More often fair | 196 | 35.25% |
| Sometimes fair | 131 | 23.56% |
| Usually unfair | 20 | 3.60% |
| Always unfair | 8 | 1.44% |

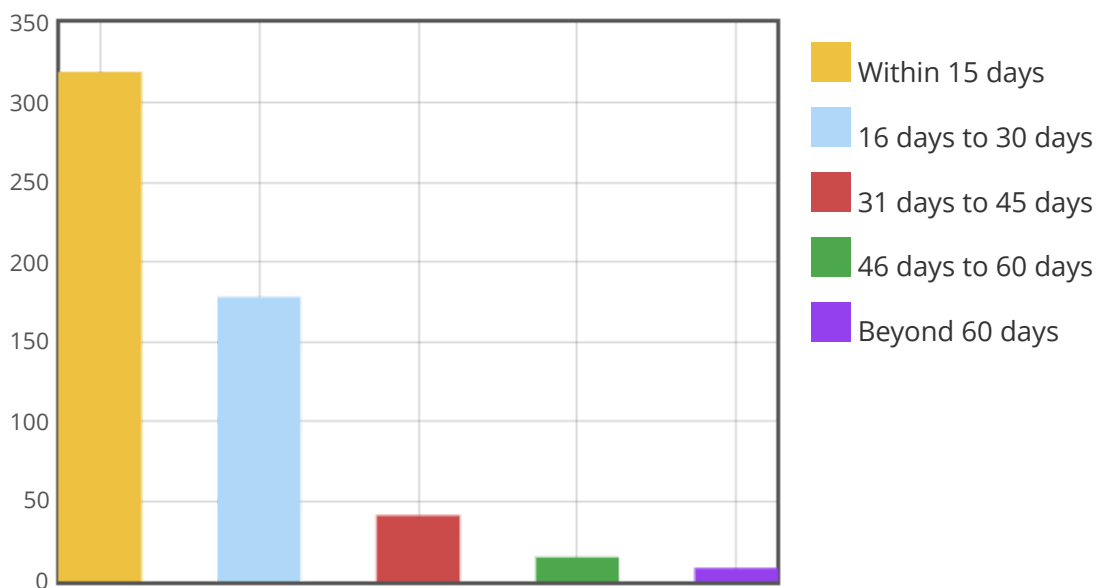


What is the average time taken by the institution for declaration of examination results?

Multiple Choice Question (Single Response)

| | |
|----------------------------|--------------------|
| <i>Users Answered</i> | 556 |
| <i>Users Skipped</i> | 33 |
| <i>Most Selected Value</i> | Within 15 days [1] |
| <i>Nr of Selections</i> | 318 |
| <i>Median</i> | Within 15 days [1] |

| | Number of selections | Fraction of selections |
|--------------------|----------------------|------------------------|
| Within 15 days | 318 | 57.19% |
| 16 days to 30 days | 177 | 31.83% |
| 31 days to 45 days | 40 | 7.19% |
| 46 days to 60 days | 14 | 2.52% |
| Beyond 60 days | 7 | 1.26% |

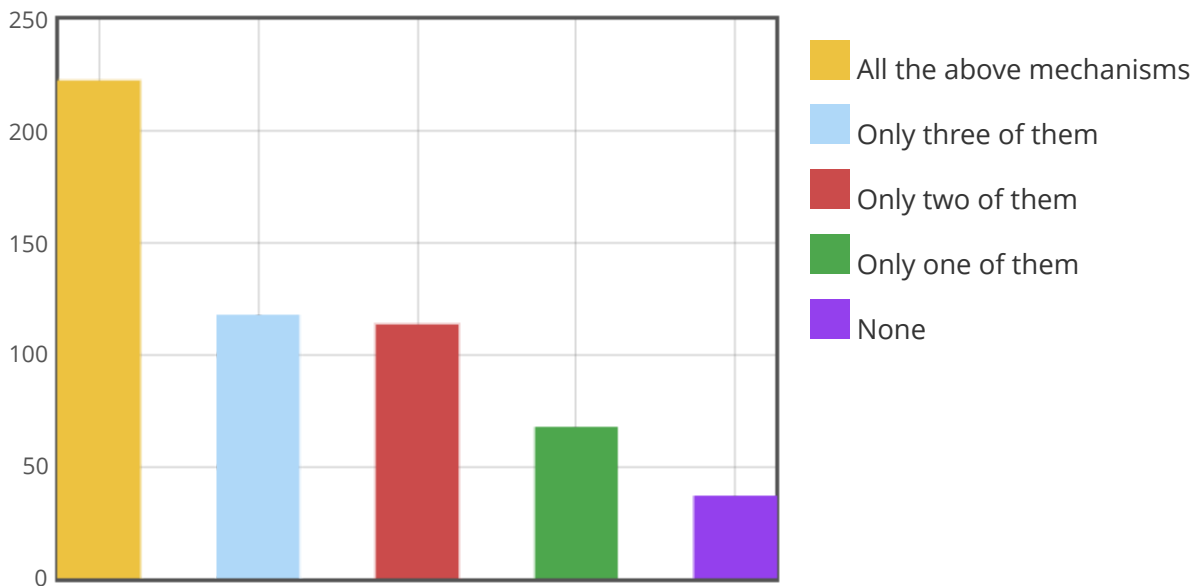


What are the mechanisms (issue of photocopy of answer sheet, re-totaling, re-evaluation and provision for grace marks) available in your institution for redressal of grievances with reference to examinations?

Multiple Choice Question (Single Response)

| | |
|----------------------------|------------------------------|
| <i>Users Answered</i> | 555 |
| <i>Users Skipped</i> | 34 |
| <i>Most Selected Value</i> | All the above mechanisms [1] |
| <i>Nr of Selections</i> | 222 |
| <i>Median</i> | Only three of them [2] |

| | Number of selections | Fraction of selections |
|--------------------------|----------------------|------------------------|
| All the above mechanisms | 222 | 40.00% |
| Only three of them | 117 | 21.08% |
| Only two of them | 113 | 20.36% |
| Only one of them | 67 | 12.07% |
| None | 36 | 6.49% |



How do you rate the procedures involved in the pre examination, examination and post examination processes of the evaluation system adopted by your institution?

Multiple Choice Question (Single Response)

| | |
|----------------------------|---------------|
| <i>Users Answered</i> | 555 |
| <i>Users Skipped</i> | 34 |
| <i>Most Selected Value</i> | Very Good [2] |
| <i>Nr of Selections</i> | 174 |
| <i>Median</i> | Very Good [2] |

| | Number of selections | Fraction of selections |
|-----------|----------------------|------------------------|
| Excellent | 156 | 28.11% |
| Very Good | 174 | 31.35% |
| Good | 164 | 29.55% |
| Average | 50 | 9.01% |
| Poor | 11 | 1.98% |

